



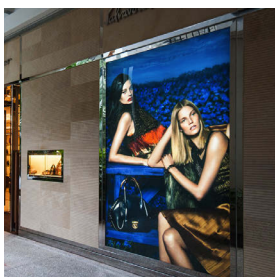
# HIDDEN HINGE LIGHT BOX

## TECHNICAL DATA

### Weatherproof design for outdoor usage:

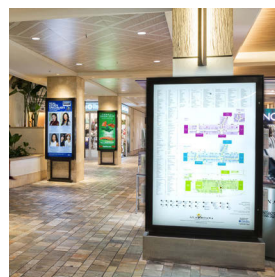
- + 3/16" Polycarbonate sheet in the door
- + Silicon seal around the perimeter
- + Drainage holes on the bottom edge

	HIDDEN HINGE STANDARD	HIDDEN HINGE LARGE FORMAT	HIDDEN HINGE DUAL SIDED
Product code	HHTB	HHLB	HHDB
Panel depth	3-7/8"	6-3/4"	9"
Snap frame	Internal - for film graphic only	Internal - for film graphic only	Internal - for film graphic only
Door frame width	3"	3"	3"
Smallest dimension available	24"x24"	24"x24"	24"x24"
Largest dimension available	100"x17'	100"x17'	100"x17'
Film graphic size	4-3/4" smaller than outside dimensions	4-3/4" smaller than outside dimensions	4-3/4" smaller than outside dimensions
Fabric graphic size	5-1/4" smaller than outside dimensions	5-1/4" smaller than outside dimensions	5-1/4" smaller than outside dimensions
Power supply	Internal, 24 V DC transformer	Internal, 24 V DC transformer	Internal, 24 V DC transformer
Power cord	8' cord or pig tail (required for outdoor)	8' cord or pig tail (required for outdoor)	8' cord or pig tail (required for outdoor)
On/Off switch	As an option	As an option	As an option



Storefront Advertising

High traffic public spaces



Directory Signage



Drive-Thru