

THIN PROFILE LIGHT BOX

Space Saving Graphics Illumination

The Thin Profile is our thinnest light box product, offering a minimalist, elegant frame to highlight your graphics. Its snap frame design allows for easy and quick graphic change, opening from all four sides.

The light box is equipped with bright LED lights that uniformly enlighten your visual to catch your customers' attention. It is available in a single and dual-sided version.



FEATURES

- » Durable aluminum construction
- » Thin profile less than 1" depth
- » Front access snap frame
- » Clear cover sheet
- » Edgelit for smooth, uniform illumination
- » Energy efficient LED strips
- » UL-Listed
- » 2 year warranty
- » Ideal for commercial indoor use



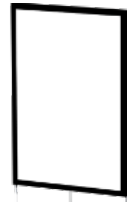
OPTIONS

- + Anodized silver / matte black powder coat standard
- + Powder coat options available
- + Custom sizes
- + One-sided or dual-sided
- + Internal or external power supply
- + Dimmable (requires hardwiring)
- + Color temperature: 3200K, 4100K, 6500K

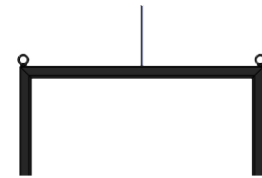
THIN PROFILE LIGHT BOX



TECHNICAL DATA

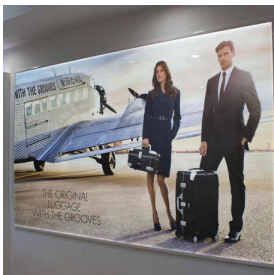


**MODEL A
STANDARD**

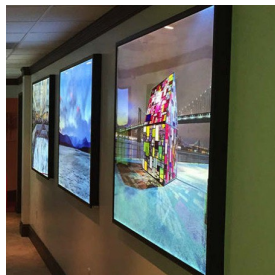


**MODEL B
DUAL SIDED**

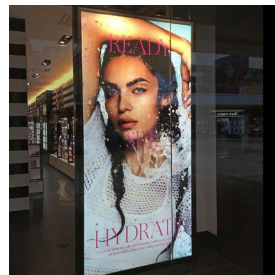
Product code	TPS	TPD
Panel depth	7/8"	1-5/8"
Snap frame	Yes	Yes
Snap frame dimension	1-1/4"	1-1/4"
Smallest dimension available	8"x8"	8"x8"
Largest dimension available	72"x120"	48"x96"
Mounting options	Z-bar included as a separate piece	Hanging hardware as an option (eyebolts or grip locks)
Power supply	External, 24 V DC transformer	External, 24 V DC transformer
Power cord	8' cord with power transformer, exits out from the back perimeter on short side	8' cord with power transformer, exit side to be specified
On/Off switch	No	As an option



Large Format



Photography Exhibit



Dual Sided



Endcap incorporation