

# SIDE ACCESS LIGHT BOX

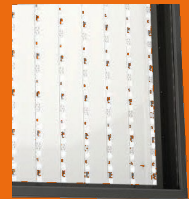
## Streamlined Illuminated Display

The Side Access Light Box offers a sleek, modern look with its minimal frame and durable illumination.

The side access frame opens on one side of the light box and allows for easy graphic change. Its LED Backlit illumination creates a vibrant graphic display, while being energy-efficient.



WITH BACKLIT Illumination



Side Snap Frame



Made in the USA



UL-Listed



Indoor Use



## FEATURES

- » Durable extruded aluminum construction
- » Single Side access frame
- » 1/8" Clear Acrylic to protect graphic
- » Narrow face frame
- » Backlit for full illumination coverage
- » Energy efficient LED strips
- » UL-Listed
- » 2 year warranty
- » Ideal for commercial indoor use



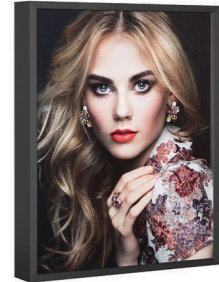
## OPTIONS

- + Anodized silver / matte black powder coat standard
- + Custom powder coat colors available
- + Custom sizes
- + One-sided or dual-sided
- + Vertical or Horizontal orientation
- + Hardwired or standard wall plug
- + Dimmable (requires hardwiring)
- + Color Temperature: 4100K, 6500K or 6500 High Output (HO)

# SIDE ACCESS LIGHT BOX



## TECHNICAL DATA



	MODEL A STANDARD	MODEL B THIN
Product code	SASB	SATB
Panel depth	5"	2-3/4"
Face frame width	9/16"	9/16"
Smallest dimension available	8"x8"	8"x8"
Largest dimension available	72"x120"	72"x120"
Power supply	External, 24 V DC transformer	External, 24 V DC transformer
Power cord	8' cord with power transformer, exits out from back or side	8' cord with power transformer, exits out from back or side



## REFERENCE SIZES & WEIGHTS (SASB)

Graphic Size	Outside Dimensions	Viewable area	Product Weight
16" x 20"	16-3/8" x 20-3/8"	15-1/4" x 19-1/4"	19lbs
24" x 36"	24- 3/8" x 36- 3/8"	23- 1/4" x 35- 1/4"	36 lbs
30" x 40"	30-3/8" x 40-3/8"	29-1/4" x 39-1/4"	45 lbs
36" x 48"	36-3/8" x 48-3/8"	35-1/4" x 47-1/4"	58 lbs
48" x 96"	48-3/8" x 96-3/8"	47-1/4" x 95-1/4"	157 lbs