

VALUE LINE LIGHT BOXES

Cost-Effective Graphics Illumination

Our Value Line offers the most cost-effective light box options available on the market in a variety of sizes. The Value and Ultra Value light boxes feature a slim frame, designed for mounting your poster graphics to a wall or a flat surface. The snap-open feature allows you to change your graphic instantly, without any difficulty.



**Wall
Power Supply
Included!**

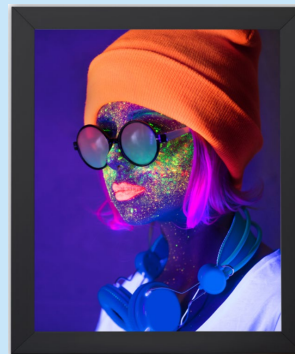


FEATURES

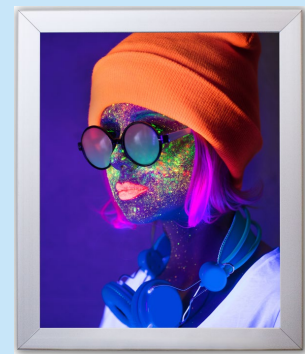
- » Thin profile with front access snap frame
- » Clear cover sheet
- » Energy efficient LED strips
- » Edgelit for bright white illumination
- » Limited warranty
- » Ideal for commercial indoor use
- » Wall Power Supply Included



FRAME OPTIONS



Matte Black



Anodized Silver

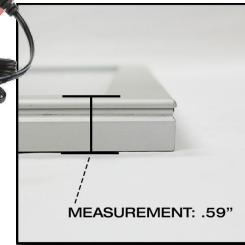
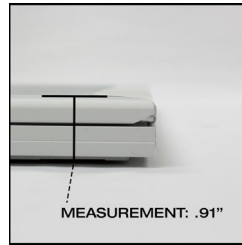
SEE NEXT PAGE FOR AVAILABLE SIZES

VALUE LINE LIGHT BOXES



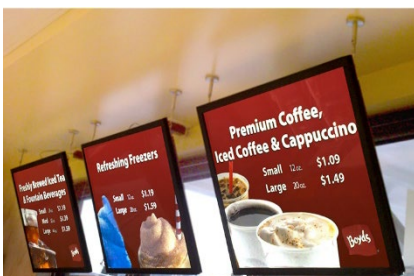
TECHNICAL DATA

**Wall
Power Supply
Included!**

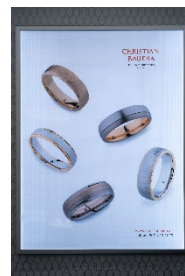


	MODEL A VALUE	MODEL B ULTRA VALUE
Face Frame	1"	1"
Panel depth	7/8"	5/8"
Brightness	2,000 lumens	1,500 lumens
Graphic Sizes* available	12" x 12"	12" x 12"
	16" x 20"	16" x 20"
	22" x 28"	22" x 28"
	24" x 36"	24" x 36"
	30" x 40"	30" x 40"
	36" x 48"	
Outside Dimensions*	Graphic size +1-5/8"	Graphic size +1"
Visual Dimensions*	Graphic size -1/2"	Graphic size -3/4"
Mounting options	Eyelets included as a separate piece	Eyelets included as a separate piece
Power supply	External, 12V transformer	External, 12V transformer
Power cord	10' cord, exits out from the edge	10' cord, exits out from the edge

*The Graphic Size refers to the print size, the Outside Dimensions to the dimensions of the light box and the Visual Dimensions to the visible graphic area once installed inside the light box.



Illuminated Menu Boards



Wall mounted advertising display



Endcap incorporation